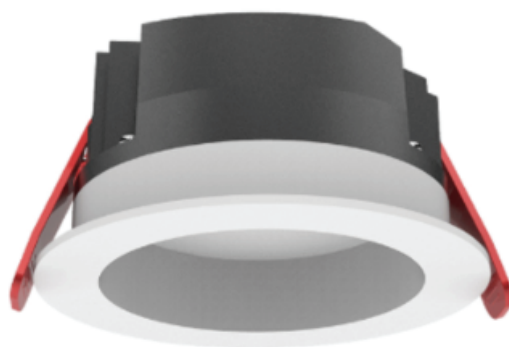


## Caer

### Recessed Downlight



### Features

- Selected LED chip with efficient driver
- Frosted cover with high transmittance, offering uniform and comfortable light
- Excellent heat dissipation design for good heat dissipation to extend the lifespan of the lamp
- Housing material: Aluminum with good performance
- Powder coated surface treatment is durable and not easy to fall off

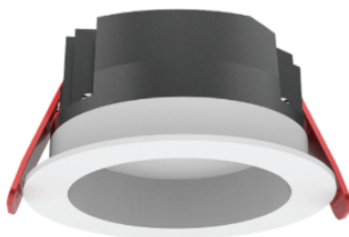
 **Recessed**

 **IP Rating**  
IP65

 **UGR**  
<24

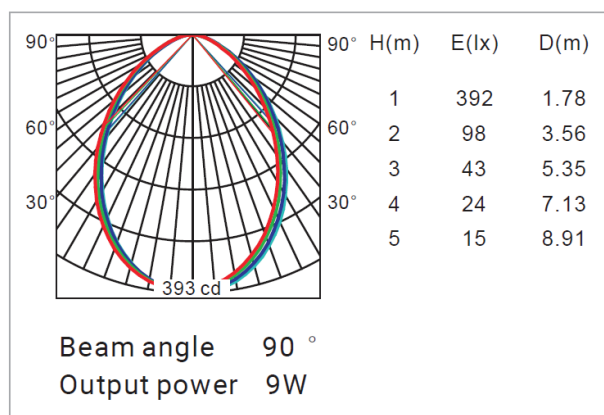
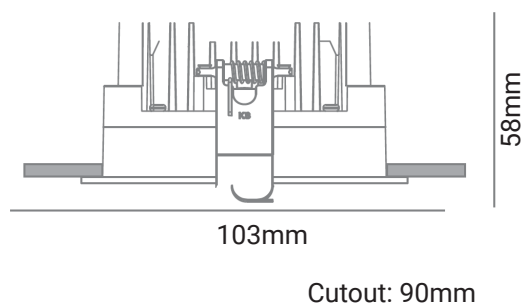
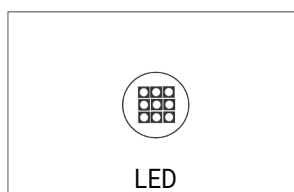
**5** years  
warranty **Standard Warranty**

## TECHNICAL DATA SHEET - CAER - 15585 - RECESSED DOWNLIGHT



### TECHNICAL DATA

|                               |   |
|-------------------------------|---|
| Product Data                  | Recessed Downlight                        |
| Lamp Type                     | SAMSUNG LED                               |
| Wattage                       | 9W  |
| Color Temperature             | 3000K                                     |
| Rated Luminaire Luminous Flux | 810lm                                     |
| Rated Luminaire Efficiency    | 90lm/W                                    |
| IP Rating                     | 65  |
| Beam Angle                    | 90°                                       |
| Voltage                       | AC220-240V                                |
| Output Voltage                | 32-42V                                    |
| Frequency Range               | 50-60 Hz                                  |
| CRI                           | Ra>80                                     |
| Power Factor                  | >0.95                                     |
| SDCM(Macadam step)            | < 4                                       |
| Max Current (mA)              | 180mA                                     |
| Output Current                | 200mA                                     |
| THD (%)                       | ≤20%                                      |
| Safety Class                  | Class II                                  |
| UGR                           | <24                                       |
| Operating Temperature         | -20°C ~ +40°C                             |
| Material                      | Die Cast Aluminium Body                   |
| Finish                        | White                                     |
| Life Span                     | 50,000 Hours                              |
| Warranty                      | 5 Years                                   |
| Applications                  | Residential, Commercial, Hospitality etc. |



### TECHNICAL OPTIONS

|                   |                                      |
|-------------------|--------------------------------------|
| Wattage           | 30W / 40W(42W) / 50W                 |
| Color Temperature | 3000K-6000K                          |
| Control           | Switchable, TRIAC, 1-10V, DALI,0-10V |