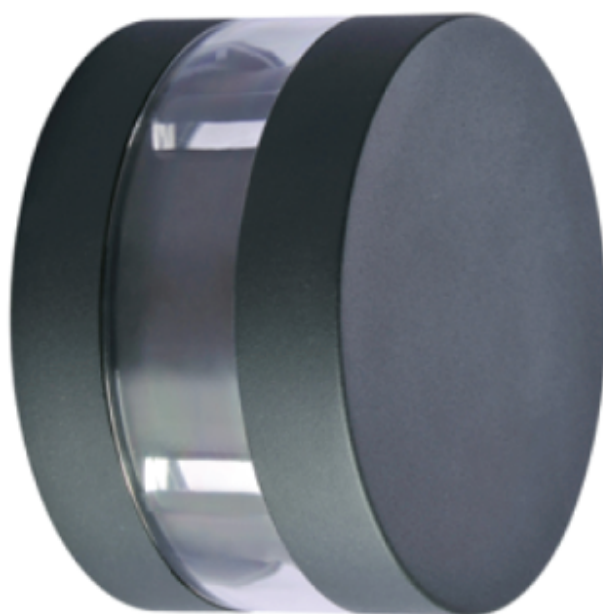


Tapia Wall Light



Features

- Made of high quality die-cast aluminum with treatment of corrosion protection and UV-proof powder coating
- PMMA Diffuser
- Gasket: Made of thermostable silica gel to improve protection class



Wall



IK Rating
IK08

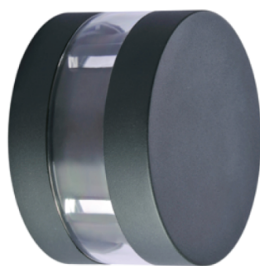


IP Rating
IP65



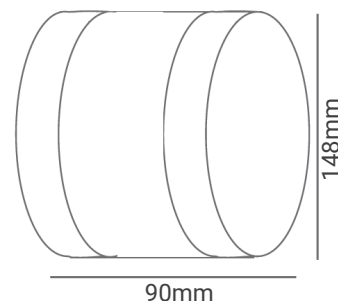
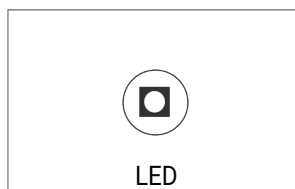
Standard Warranty

TECHNICAL DATA SHEET - TAPIA - 15235 - WALL LIGHT



TECHNICAL DATA

Product Data	Wall light
Lamp Type	EPISTAR LED
Wattage	4x2W
Color Temperature	3000K
Rated Luminaire Luminous Flux	870lm
Rated Luminaire Efficiency	145lm/W
IP Rating	65
Beam Angle	5°
Voltage	AC220-240V
Frequency Range	50-60 Hz
CRI	Ra>80
Power Factor	>0.5
Output Current	300mA
IK Rating	08
Working Temperature	-20°C ~+50°C
Safety Class	Class I
SDCM (MacAdam)	<3
Material	Aluminium Body + PMMA Diffuser
Finish	Dark grey UV-proof powder coating
Life Span	50,000 Hours
Warranty	5 Years
Applications	Outdoors, Residential, Commercial, Hospitality etc.



TECHNICAL OPTIONS

Color Temperature	3000K-6000K
Control	Switchable, TRIAC, DALI, 1-10V, 0-10V