

Quara

Linear Inground Light



Features

- Mounting Profile: Anodized or powder coated 6063 Aluminum profile.
- Light Window/ Diffuser: Thick Optical PMMA (T=10mm), efficiency \geq 70%.
- UV resistant, flame resistant & salt water resistant
- Load Capacity: 3000kgs



Recessed



IK Rating
IK10



IP Rating
IP68

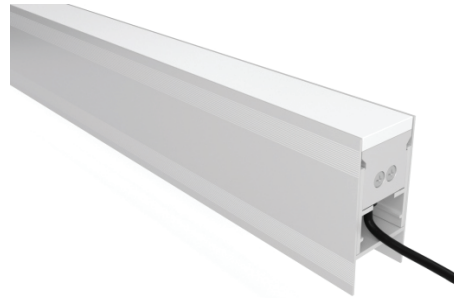


Standard Warranty



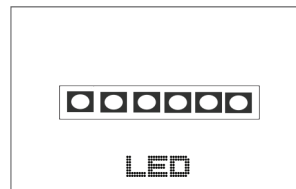
Fire Rated

TECHNICAL DATA SHEET - QUARA - 20844 - LINEAR INGROUND LIGHT



TECHNICAL DATA

Product Data	Inground Light
Lamp Type	BRIDGELUX LED
LED Qty	240LED/Mtr
Wattage	14.4W/Mtr
Color Temperature	3000K
Rated Luminaire Luminous Flux	1152lm
Rated Luminaire Efficiency	80lm/W
IP Rating	68
Beam Angle	120°
Input Voltage	DC24V
Frequency Range	50-60 Hz
CRI	Ra>80
Power Factor	>0.9
Operating Temperature	-20°C ~ +55°C
Safety Class	I
IK Rating	10
SDCM	< 3 MacAdam
Material	Aluminum+PMMA
Finish	Silver
Life Span	50,000 Hours
Warranty	5 Years
Applications	Walkways, Pathways, etc.

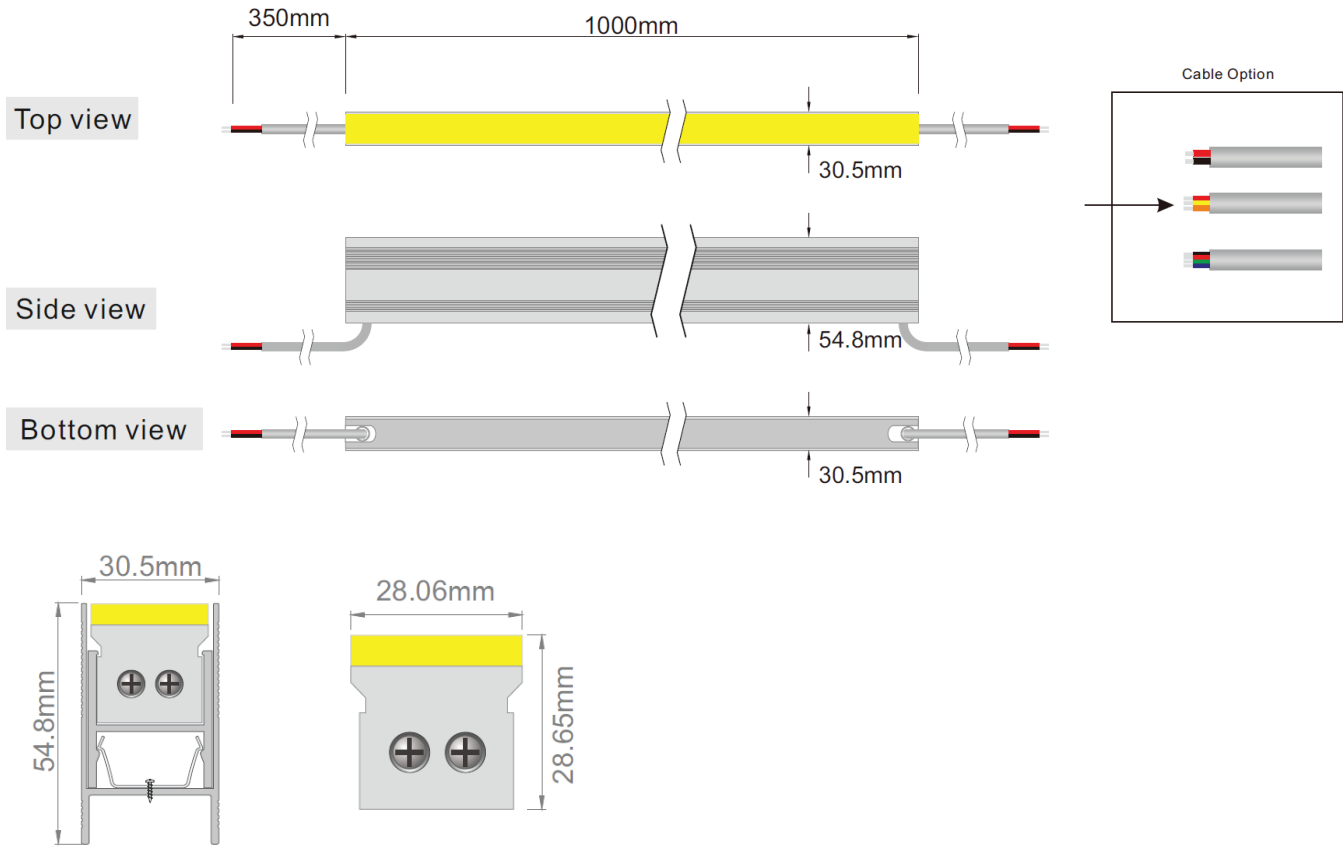


TECHNICAL OPTIONS

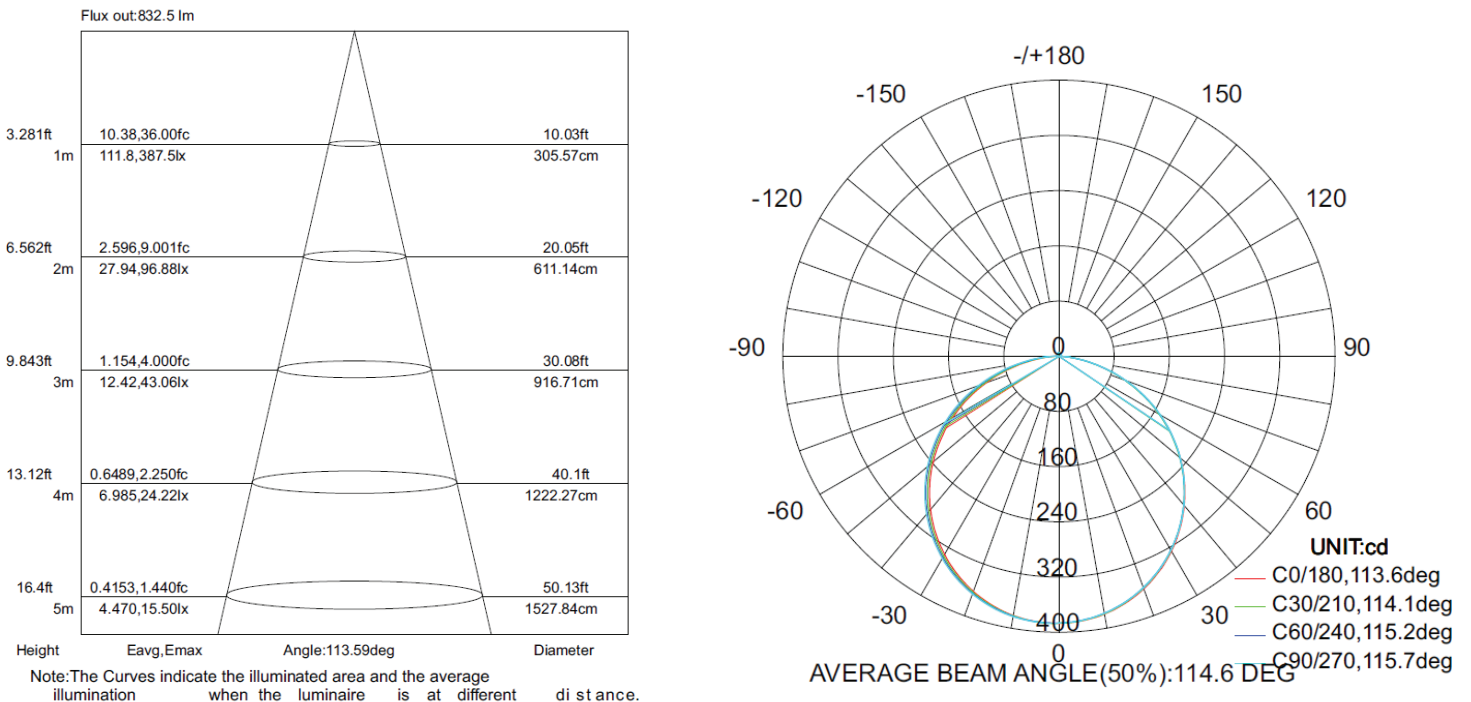
Color Temperature	2700K-6000K, RGB
Accessories	Stainless Steel Cap, Connector
Control	Triac/Dali/1-10V/PWM/DMX512

TECHNICAL DATA SHEET - QUARA - 20844 - LINEAR INGROUND LIGHT

DIMENSIONS



LIGHT DISTRIBUTION CURVE



Effective Average Illuminance