

Cable Entry

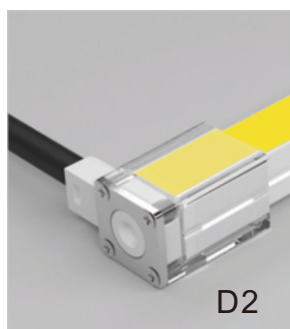
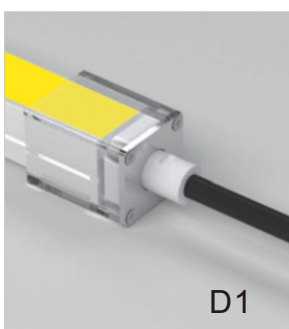
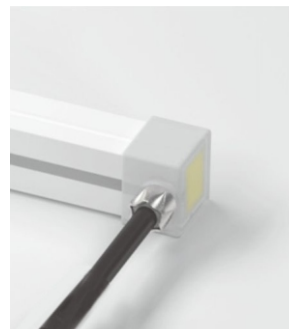
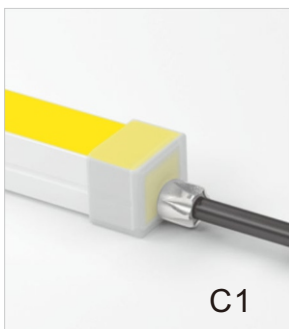
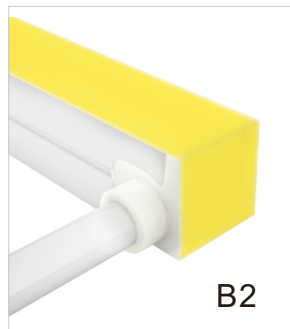
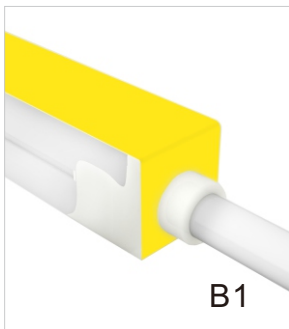
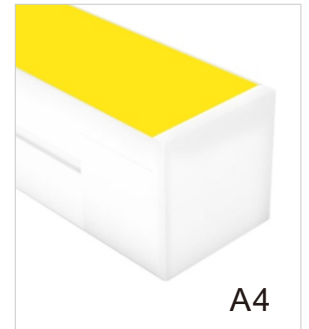
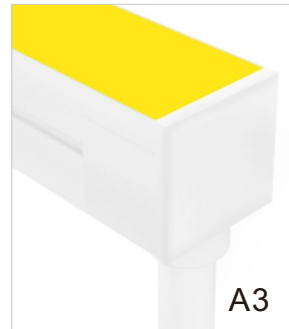
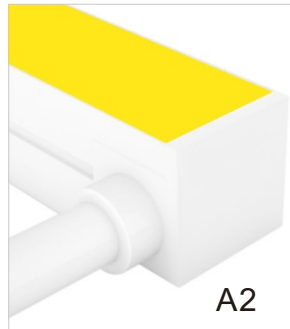
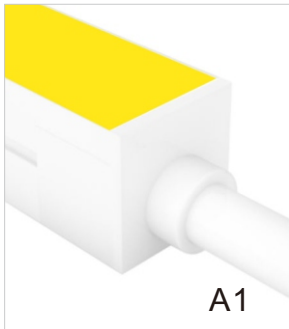
Installation Manual

Front Cable Entry

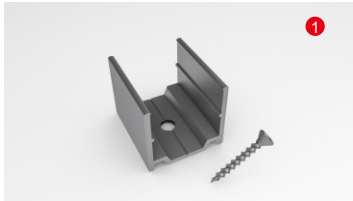
Side Cable Entry

Bottom Cable Entry

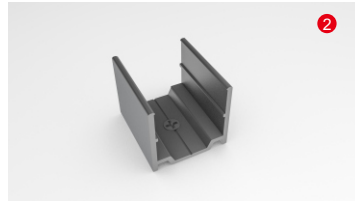
End cap



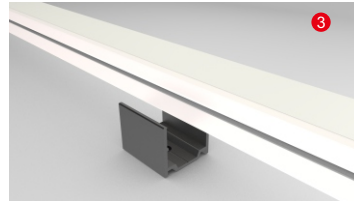
Clips mounting



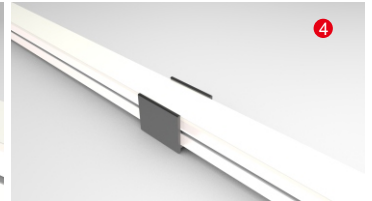
Prepare for screws and clips



Screw the screw into the clips



Put the light upside down and gently insert the lamp into the clip

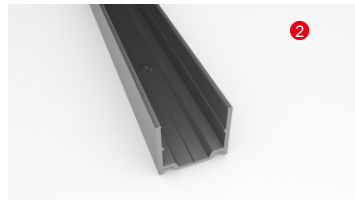


Installed complete

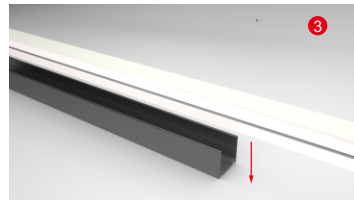
Aluminum chanel mounting



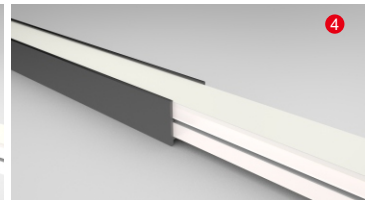
Prepare for screws and aluminium groove



Drive the screw into the aluminum groove

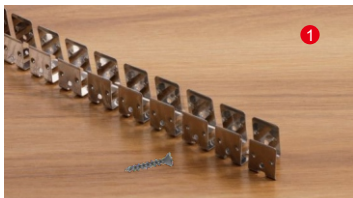


Put the Neon into the aluminum groove in the direction of the arrow

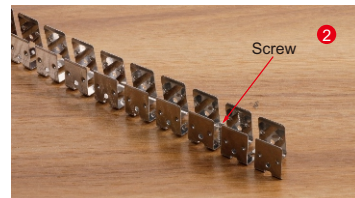


Installed complete

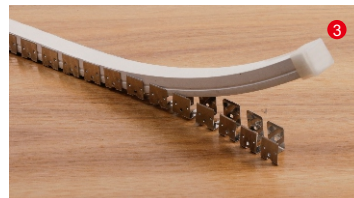
Chain mounting



Prepare the chain and screws



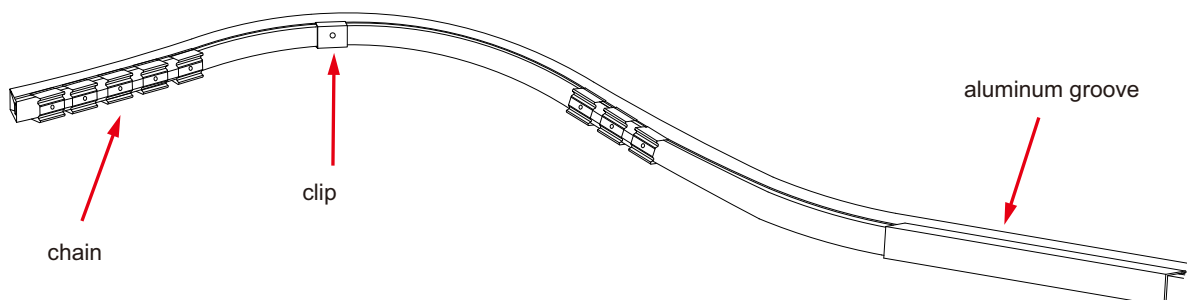
Drive the screws through the holes of the chain into the wood board



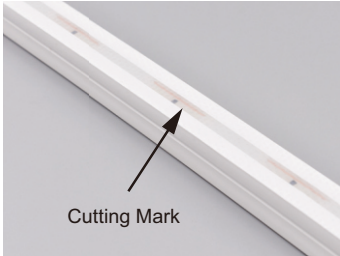
Slowly embed the neon lights in the chain



Installed complete



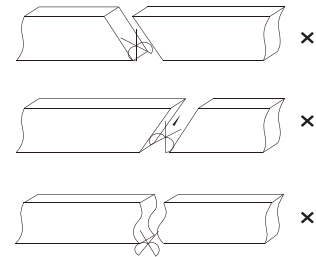
Cutting method



Remark: The bottom of the led strip has transparent window, the black marker is the cutting position

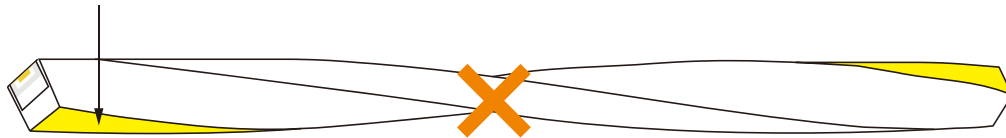


Use a cutting jig, vertical cutting precisely in the exact cutting position of led strip.



Please don't be feel free to cut and cut into an oblique angle or cambered section.

Luminous surface



Note: Please do not twist at will to avoid damage to the lamp belt