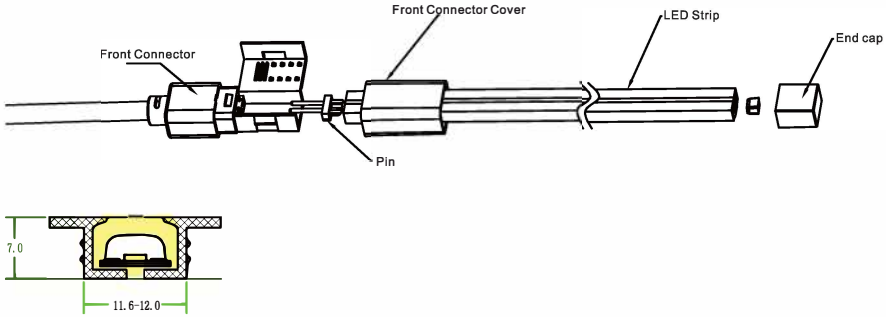


## THE PRODUCT STRUCTURE DIAGRAM

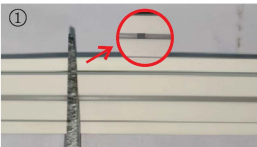


## PRODUCTION SPECIFICATIONS

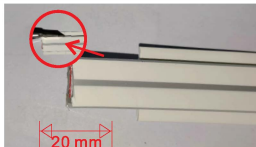
ITEM NUMBER	LED Q.T.Y /Meter	Ra	VOLTAGE	CUTTABLE	PACKAGE
SKU 20006	280P	80	240V	0.5M	50M/ROLL

## INSTALLATION INSTRUCTIONS

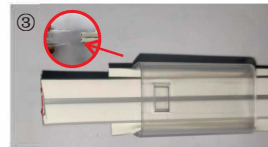
**⚠ Before finish the installation , do not connect the power**



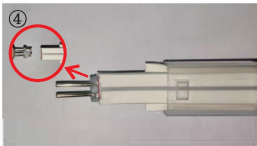
1. Cut the strip according to your requirement (each 0.25 meter can be cut, with marks at the backside);



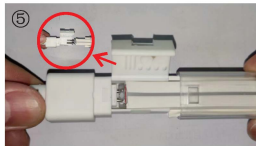
2. First cut and remove 20mm from both sides of the strips;



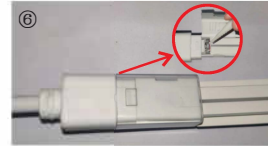
3. To install the front connector, the front connector cover shall be covered on the strips, and the groove in the front connector cover shall be opposite to the bottom of the strips and close to the pin direction;



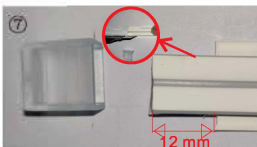
4. Insert the pin into the strips so that the copper has good contact with the FPC pad and cannot damage the pad;



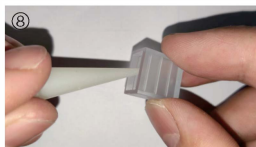
5. The strips with the pin is inserted into the front connector's circular hole;



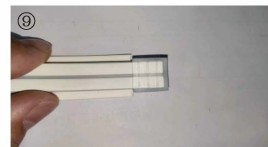
6. Then fill the upper part of the pin with glue, then press the front connector clamshell into the front connector, and put the front connector sleeve into the front connector;



7. Cut and remove 12mm from the other end of the strips;



8. Inject glue into the end cap;



9. Put the end cap coated with glue into the end of the strips