

Installation Instructions

Thanks for choosing this product, please read the instructions which would tell you the way to connect and some matters need attention before installing and using. Take care of the instructions in case you might use it.

Specification

Product: Embedded LED light

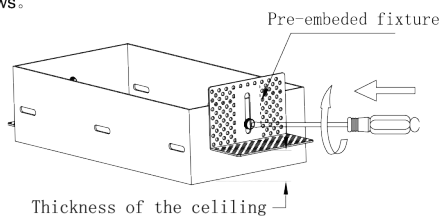
Voltage: 220V 50Hz-60Hz

Accessories: 1. Lamp .

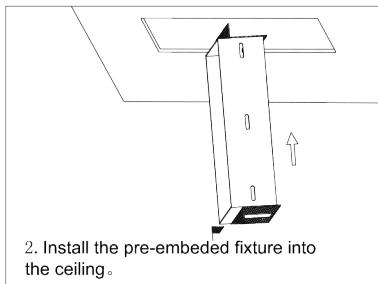
2. Instruction for use.

Installation Instruction

1. Measure the tickness of ceiling,then adjust the pre-embedded fixture accordingly,and finally tight with screws.

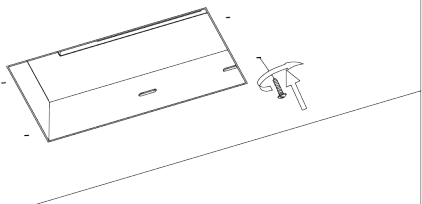


Model/Series Ref

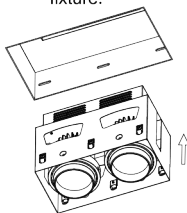


2. Install the pre-embedded fixture into the ceiling.

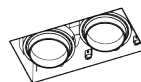
3. As belowed showing,Tight pre-embedded fixture with screws,then finish the painting for where the screws placed.



4. Put lamp into the fixture.

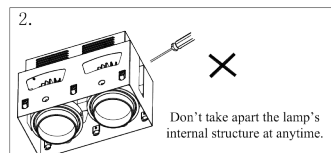
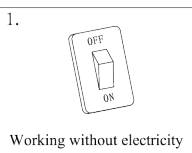


4. The effect after installation.



Matters Need Attention

- ! Use under the indoor conditions and prevent from shock, dust and high temperature, or will easily lead to fire and electric shock.
- ! In case of electric shock, please shut off the power before installing, cleaning and fixing.
- ! Please make sure the embedded down light with 95 mm draught hole at least. The lamp should be kept at least 500 mm from the irradiated object, or will lead to fire and fault.
- ! Avoid to cover lamps by thermal insulation material or similar materials at any case.
- ! Should not take apart the lamp's internal structure at anytime.
- ! Cut off the power when the product works abnormally and contact with our service center or our specialists.



Maintain

In order to use our products effectively, please do an all-around clean every six months. You can use hair-dryer or dry brush to get rid of the dust on the surface, then use soft cloth with alcohol to clean the product. Dust not only affect the out looking, but also badly impair the heat dispersion and shorten the life span. Please don't use water, gasoline and Tiana to clean it, or will destroy the lamp or its color. Every 3 or 5 years, please ask the specialists to check the lights and chang the broken components in case of fire.