

Pito T8 Tube




Features

- One ended & double ended bypass Type B
- Base: G13 available
- Environmentally friendly without mercury
- 100~120LPW high lumen efficiency
- No mercury glass so NO Regulated Universal Waste rules or fines

 Tube

 IP Rating
IP20

 UGR
<22

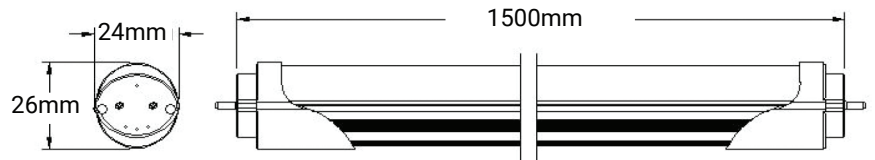
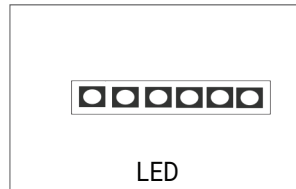
 5 years
warranty Standard Warranty

TECHNICAL DATA SHEET - PITO - 15536 - T8 TUBE



TECHNICAL DATA

Product Data	T8 Tube
Lamp Base	G13
Lamp Type	EPISTAR LED
Wattage	25W
Color Temperature	6000K
Rated Luminaire Luminous Flux	3000lm
Rated Luminaire Efficiency	120lm/W
IP Rating	20
Beam Angle	120°
Output Current	270~295mA
Voltage	AC85-265V
CRI	Ra>85
Power Factor	>0.97
Frequency Range	50-60 Hz
Operating Temperature	-15°C ~ +50°C
UGR Rating	<22
Safety Class	Class II
Material	Aluminum + PC
Finish	White
Life Span	50,000 Hours
Warranty	5 Years
Applications	Hospitals, Commercial, Hospitality etc.



TECHNICAL OPTIONS

Wattage	9W, 14W, 20W, 30W
Color Temperature	2700K - 6500K
Switchable	Switchable, DALI, TRIAC, 0-10V